

Time Capsule[®]

Digital Video Recorders

8, 16, 24 and 32 Input Models

Triple Track Recording System

Integrated Image Browsers w/ Enhanced Search Features

Hard Drive Preservation System

Hard Drive Mirroring System

Comprehensive Digital Video Motion Detection

USB Thumb Drive Ready

10/100 Ethernet

Transaction Interface Ready

Dual Multi-Screen Display Outputs

100% Embedded

RoHS Compliant

Remote Upgradable Firmware/ Features

Designed Manufactured Assembled in U.S.A

OSI Systems Inc. OSI Systems Inc. OSI Systems Inc. OSI Systems Inc.

Digital H2 MX Series
Advanced Imagery

Digital H2 MX Series
Advanced Imagery

JPEG2000
Advanced Compression
The Serious Choice for Security/Surveillance, Satellite and Medical Imagery

1 - 8 Hard Drives
4 Terabyte Capacity

Digital H2 MX Accessories

Enet-ID

Ethernet Transaction Parser



Advanced Imagery

H2mx Specifications v1.01

Compression Method: The H2mx DVR encompasses the latest innovations in JPEG2000 technology, which uses state-of-the-art compression techniques based on wavelet technology. JPEG2000 is not only ideal for security / surveillance applications but is also the overwhelming choice in satellite and medical imagery for its ability to preserve image detail.

Recording Modes:

Simultaneous sequential and event based recording, triggered by internal motion detection, external contacts and ATM/POS transactions. Each mode may run continuous 24/7 or scheduled for specific times and days of week.

Image Archiving:

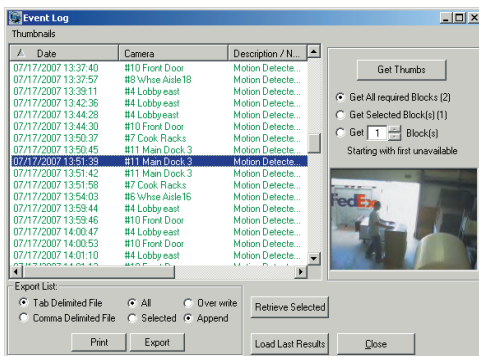
Three independent storage groups/terms. One for sequential and two for event based recording. User customized size/duration for each term. Modifications to wrapped terms automatically preserves most recent recordings.

Protected Recording:

In cases where valuable recording must not be overwritten, segments of recorded images may be locked remotely via Command Software and released at a later time.

Event Image Browser:

An integrated feature that captures a single QCIF snapshot of each motion or contact based event. When scanning an event list the browser image provides instant event recognition.



Video Inputs:

8 - 32 BNC female connectors (Dependent on model)
1Vpp nominal composite video, NTSC RS170/170A
75 ohm terminated.

2 Independent, Monitor Outputs:

2, BNC, 1Vpp nominal composite video into a 75 ohm load.
2, S-Video, 4 pin mini-DIN, female connectors

Mouse Port/Mouse Type:

PS2, Rear Panel, Microsoft and PC compatible
USB, Front Panel, Microsoft and PC compatible

EXT. Modem/Direct Serial Port:

DB9 male, RS232 Serial @ 115kb max

Internal Ethernet 10BaseT, 100BaseT:

RJ45 female connector

RS485 Multi-function Port:

RJ45 female connector

Transaction Interface Port:

3 pin female quick release terminal blocks
Direct connect to QSI Transaction Modules

Programmable Alarm/Contact Input ports:

8 female quick release terminal blocks
Programmable for NO or NC

Progressive Scan Video Motion: The H2mx series contains an embedded Digital Video Motion Processor. Each video input is divided in to 192 zones, 16 across by 12 down that are easily programmed via Time Capsule® remote software or locally via on screen menus. Each zone may have its own sensitivity setting or can be grouped with other zones to form a motion cluster.

32x2 Video Matrix/Multiplexer:

Built-in to the H2mx series is a 32 input digital video multiplexer with 2 independent multi-screen display outputs. The design also incorporates a true cross-point matrix switch allowing any of the 32 inputs to be displayed on either or both display channel outputs. Quad, 4x4 and full screen displays are programmable both locally and remotely via Time Capsule® remote software.

Sequential Image Browser:

A user programmable feature that records time-lapse, image, indexes into the sequential recording. Similar to the Event Browser it enables a fast, efficient peek into large amounts of recording.

Dual Front-panel USB Host ports:

USB mouse control and video image transfer to USB memory stick along with an integrated, portable, image decoder/player.

Remote Access Software:

The Time Capsule® Manager provides remote programming and access to stored images on the H2mx Digital Recorders. The software application runs under Windows 2000, XP and Vista platforms. Remote Access software is included with all H2mx models free of charge and contains no seat license fees. Features include but are not limited to: live look-in, Image retrieval, Event / Transaction list searches, Multi-site management, Image Enhancement and an integrated Health Check scheduler for automated verification and accumulation of remote site status and statistics.

Alarm Pulse Output:

2 pin female quick release terminal block
current sink to ground, 100ma max.

Compression Type:

JPEG2000, w/programmable image sizes
Independent for each video input and each term.

Video Recording:

2CIF, CIF, QCIF, resolutions supported (standard)
4CIF resolution (optional)

The following rates @ 2CIF/CIF setting:

120/240 fps Single JPEG2000 Engine (standard)
240/480 fps Dual JPG2000 Engines (optional)

Storage Media:

Standard IDE Drives, Eight @ 500 Gigabyte with a 4000 Gigabyte maximum combined storage.

USB Host port:

2 x USB 2.0 Slow/Full speed Host/Slave Ports

Time/Date Generator:

ISO 8601 display/Automatic Daylight Savings adjust

System Program:

Flash EPROM based for remote updating of new features and system updates

Power:

AC input 85-264VAC 47-63 Hz. Auto Detection
Switch mode supply UL1950, CSA950, EN60950, CE Mark.

Size/weight:

17.5" W x 19.875"D x 3.5"H

Enclosed metal case. 14.2 lbs (excluding hard drives)

IDE drive weight 1lb,1oz ea. typical (8 drive capacity)

Operating Temperature: 32° to 122° F (0 to 50 C)



Find us at www.qsisystems.com
603-893-7707 fax 603-893-7714



Designed, Manufactured and Assembled in the U.S.A.
Copyright QSI Systems Inc. 2007 All Rights Reserved
Specifications are subject to change without notice